

Rooster Tail Engines – Velocity Raptor Intake System – Piston Port

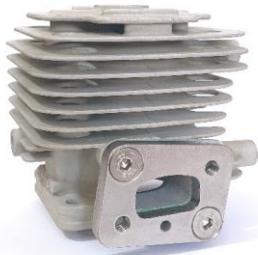
1. Disassemble the unit into its separate components.
2. The RTE Super Flow Fuel Line Kit can remain packaged at this stage.



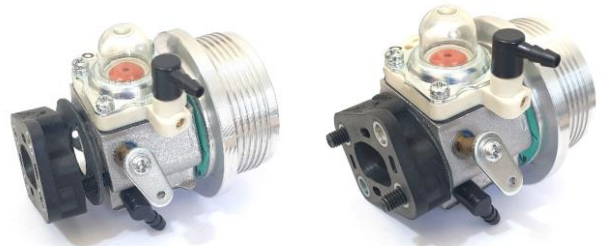
3. **You MUST use only the supplied components. The v-stack, gaskets, spacers, and bolts are specific to this system.**
4. Insert the Mounting Plate Screws into the Mounting Plate countersunk holes.
5. Place the Manifold Gasket with the CYL mark as shown below.
6. Place a drop of Loctite 263 on the first 4 threads of each screw, wipe around threads with finger.



7. Clean any old Loctite out from the cylinders manifold mounting holes. A 5mm thread tap is best for this.
8. Ensure gasket face is clean of any material, and free from any damage.
9. Install assembled plate onto cylinder/engine, as shown below.
10. Torque screws to 45in/lbs or 5.1nm



11. Assemble the RTE Super Charge Velocity Stack, RTE High Temp Velocity Stack Gasket, RTE Full Mod Carburettor and carburettor mounting bolts.
12. Install RTE High Temp Carburettor Gasket (grey) and RTE Insulator with RT lettering facing up.
13. Holding it all together firmly, ensure mounting bolts are pushed all the way through.



IMPORTANT

The exposed bolt length needs to be between 5mm and 6mm.

For this intake system we have pre-set the bolt lengths.

Bolts protruding longer than 6mm past the Insulator will damage your cylinder and Mounting Plate once assembled.

If needed, cut your bolts to length, then proceed to the next step.

14. Place RTE High Temp Manifold Gasket (green), with the word CARB facing/against the insulator.
15. Install the complete assembly onto Mounting Plate.
16. Torque the carburettor mounting bolts to 40in/lbs.



Finished

Use the Super Flow Fuel Line Kit Installation Instructions to complete the set up. Download from RTE website.